

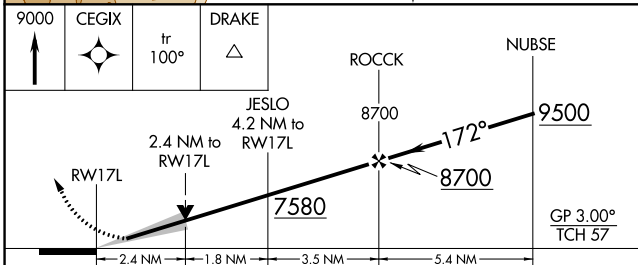
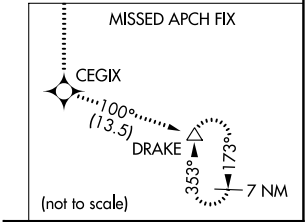
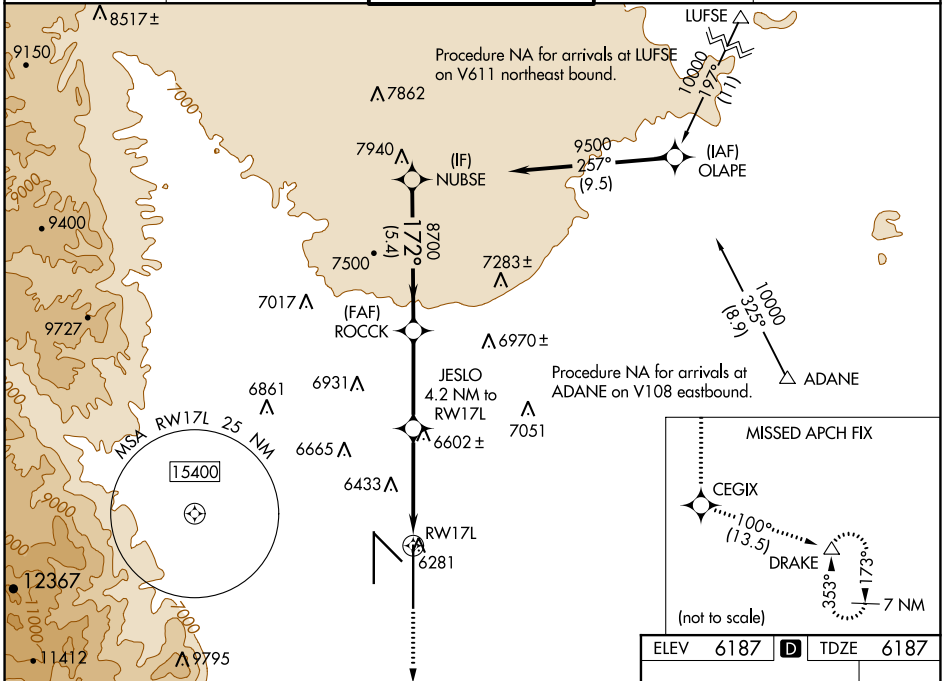
WAAS CH <b>69618</b> <b>W17A</b>	APP CRS <b>172°</b>	Rwy Idg TDZE <b>6187</b> Apt Elev <b>6187</b>	<b>13500</b>
--	------------------------	---	--------------

# RNAV (GPS) Y RWY 17L

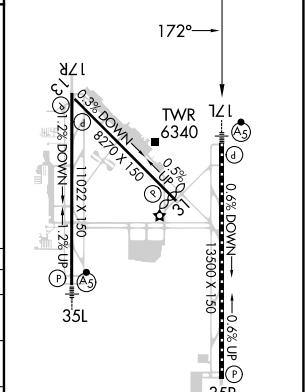
CITY OF COLORADO SPRINGS MUNI (COS)

RNP APCH - GPS.	MALSRL	MISSED APPROACH: Climb to 9000 direct CEGIX and on track 100° to DRAKE and hold.
<p>For uncorrected Baro-VNAV systems, LNAV/VNAV NA below -21°C or above 44°C. For inop MALSRL, increase LNAV Cat C/D visibility to 2½ SM.</p>		

ATIS <b>125.0 254.3</b>	SPRINGS APP CON <b>124.0 257.875</b>	SPRINGS TOWER <b>119.9 360.6</b>	GND CON <b>121.7 348.6</b>	CLNC DEL <b>134.45 363.125</b>
----------------------------	---	-------------------------------------	-------------------------------	-----------------------------------



ELEV 6187	<b>D</b>	TDZE 6187
-----------	----------	-----------



CATEGORY	A	B	C	D
LPV DA		6387/18	200 (200-½)	
LNAV/VNAV DA		6602/45	415 (500-¾)	
LNAV MDA	7000/24 813 (900-½)	7000/40 813 (900-¾)	7000-1⅞	813 (900-1⅞)
<b>C</b> CIRCLING	7000-1¼	813 (900-1¼)	7040-2½ 853 (900-2½)	7260-3 1073 (1100-3)

MIRL Rwy 13-31  
HIRL Rwy 17R-35L and 17L-35R  
REIL Rwy 13, 17R, 31, and 35R  
TDZ/CL Rwy 17L and 35R

SW-1, 22 FEB 2024 to 21 MAR 2024

SW-1, 22 FEB 2024 to 21 MAR 2024