

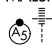
LOC I-COS 109.9	APP CRS 352°	Rwy ldg TDZE Apt Elev	11022 6075 6187
---------------------------	------------------------	-----------------------------	--

ILS or LOC RWY 35L

CITY OF COLORADO SPRINGS MUNI (COS)

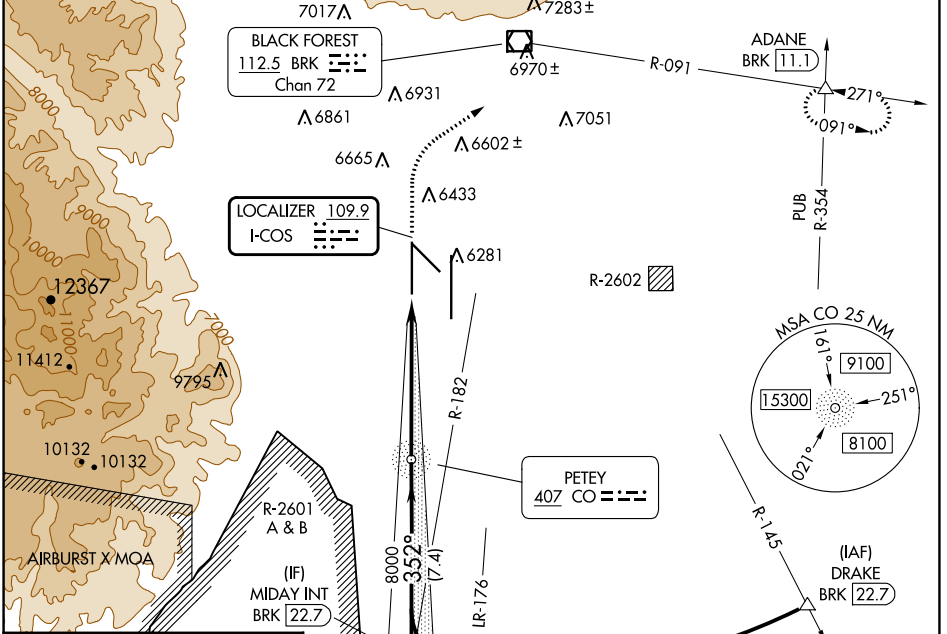
ADF required for LOC only.

⚠ RADAR monitoring required when R-2601 in use. For inop ALS, increase S-LOC 35L Cat C/D visibility to RVR 4500.
*RVR 1800 authorized with use of FD or AP or HUD to DA.

MALSR 

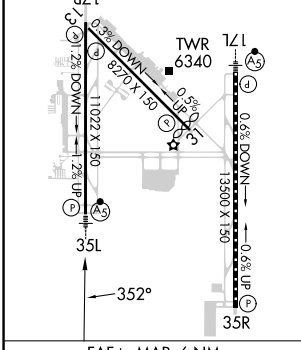
MISSED APPROACH: Climb to 6700 then climbing right turn to 9000 on heading 047° and BRK VOR/DME R-091 to ADANE INT/BRK 11.1 DME and hold.

ATIS 125.0 254.3	SPRINGS APP CON 124.0 257.875	SPRINGS TOWER 119.9 360.6	GND CON 121.7 348.6	CLNC DEL 134.45 363.125
----------------------------	---	-------------------------------------	-------------------------------	-----------------------------------



ELEV 6187	D	TDZE 6075
-----------	----------	-----------

HIRL Rwy 17R-35L and 17L-35R
REIL Rwy 13, 17R, 31 and 35R
TDZ/CL Rwy 17L and 35R
MIRL Rwy 13-31



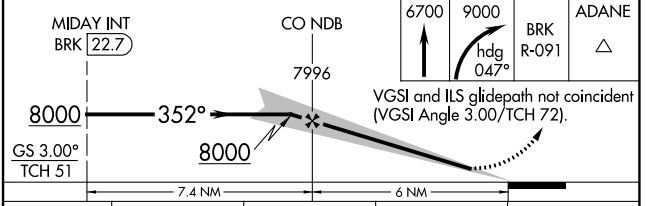
Procedure NA for arrival on PUB VORTAC airway radials 267 CW 354.

IAF PUEBLO 116.7 PUB Chan 114

IR-176

BRK 22.7 Arc

8000 313° (21.4)



CATEGORY	A	B	C	D
S-ILS 35L*		6275/24	200 (100-½)	
S-LOC 35L		6340/24	265 (200-½)	
C CIRCLING	6740-1 553 (600-1)	6760-1 573 (600-1)	6980-2¼ 793 (800-2¼)	7240-3 1053 (1100-3)

SW-1, 22 FEB 2024 to 21 MAR 2024

SW-1, 22 FEB 2024 to 21 MAR 2024