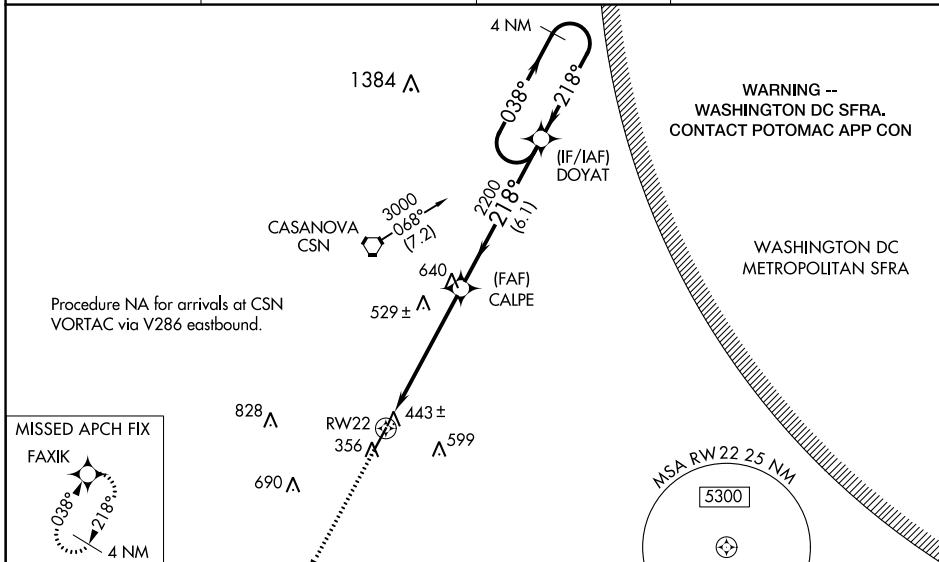


WAAS CH <b>56306</b> <b>W22A</b>	APP CRS <b>218°</b>	Rwy Idg TDZE <b>315</b> Apt Elev <b>316</b>
--	------------------------	---

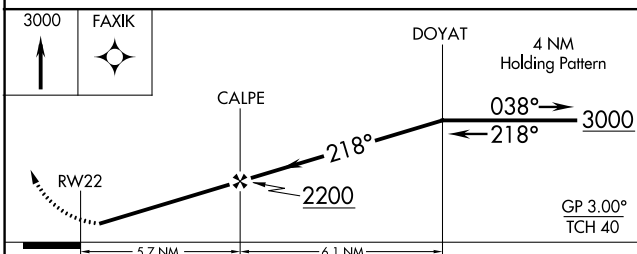
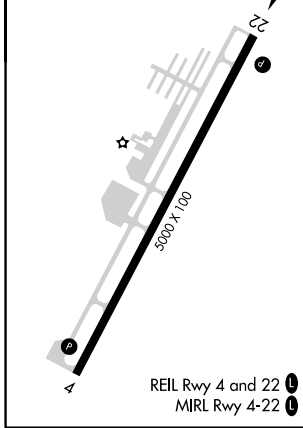
# RNAV (GPS) RWY 22

CULPEPER RGNL (CJR)

RNP APCH.			MISSED APPROACH: Climb to 3000 direct FAXIK and hold.
<p><b>⚠</b> When VGSI inoperative, procedure NA at night. Baro-VNAV NA when using Washington Dulles Intl altimeter setting. For uncompensated Baro-VNAV systems, LNAV/VNAV NA below -15°C or above 48°C. Rwy 22 helicopter visibility reduction below 1 SM NA. When local altimeter setting not received, use Washington Dulles Intl altimeter setting and increase all DAs/MDAs 80 feet, LPV and LNAV/VNAV all Cats visibility ¼ mile, LNAV Cats C and D visibility ¼ mile.</p>			
AWOS-3 <b>119.325</b>	POTOMAC APP CON <b>128.525 306.925</b>	CLNC DEL <b>121.6</b>	UNICOM <b>123.075 (CTAF) Ⓛ</b>



ELEV <b>316</b>	TDZE <b>315</b>
-----------------	-----------------



CATEGORY	A	B	C	D
LPV DA	657-1¼		342 (400-1¼)	
LNAV/VNAV DA	703-1½		388 (400-1½)	
LNAV MDA	800-1	485 (500-1)	800-1¼	800-1½
			485 (500-1¼)	485 (500-1½)

NE-3, 22 FEB 2024 to 21 MAR 2024

NE-3, 22 FEB 2024 to 21 MAR 2024