

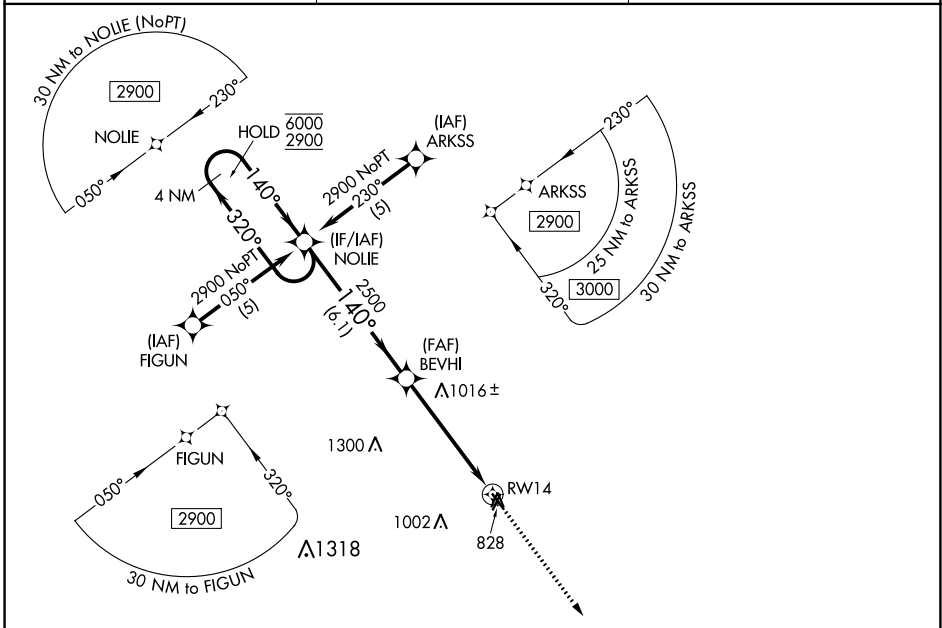
APP CRS <b>140°</b>	Rwy ldg <b>3899</b>
	TDZE <b>783</b>
	Apt Elev <b>783</b>

# RNAV (GPS) RWY 14

CHILLICOTHE MUNI (CHT)

RNP APCH.	Rwy 14 helicopter visibility reduction below 1 SM NA. Procedure NA at night. When local altimeter setting not received, use Kansas City Intl altimeter setting and increase all MDA 200 feet.	MISSED APPROACH: Climb to 2900 direct TUDEE and hold.
-----------	--	---

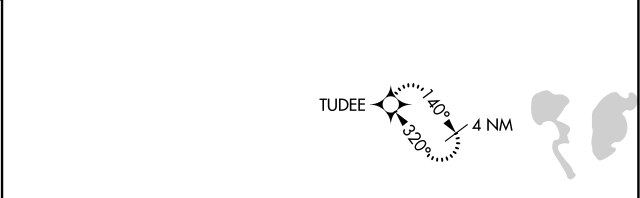
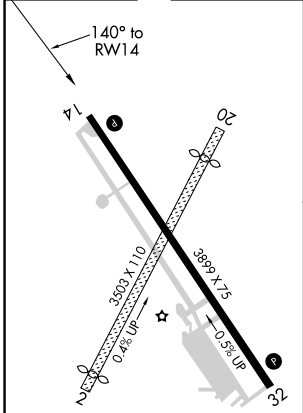
AWOS-3 <b>118.175</b>	KANSAS CITY CENTER <b>125.25 235.975</b>	UNICOM <b>122.8 (CTAF)</b>
--------------------------	---	-------------------------------



NC-3, 22 FEB 2024 to 21 MAR 2024

NC-3, 22 FEB 2024 to 21 MAR 2024

ELEV 783	TDZE 783
----------	----------



4 NM Holding Pattern	NOLIE	BEVHI	TUDEE
6000 2900	320° 140°	140°	2900
		3.04° TCH 44	TUDEE
	6.1 NM	5.2 NM	

MIRL Rwy 14-32	
REIL Rwy 14 and 32	

CATEGORY	A	B	C	D
LNAV MDA	1280-1	497 (500-1)		NA