

# RNAV (GPS) RWY 16

ANSON COUNTY/JEFF CLOUD FLD (A/F P)

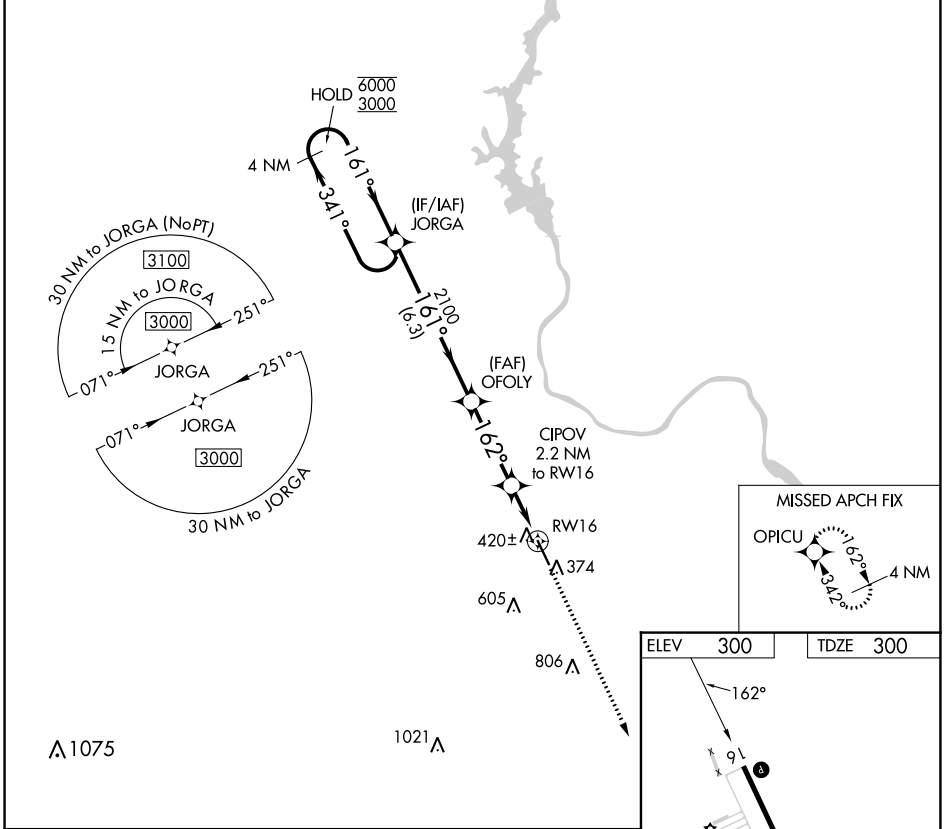
APP CRS	Rwy Idg	<b>5498</b>
<b>162°</b>	TDZE	<b>300</b>
	Apt Elev	<b>300</b>

RNP APCH - GPS.

**Procedure NA at night.**  
Rwy 16 helicopter visibility reduction below 1 SM NA.

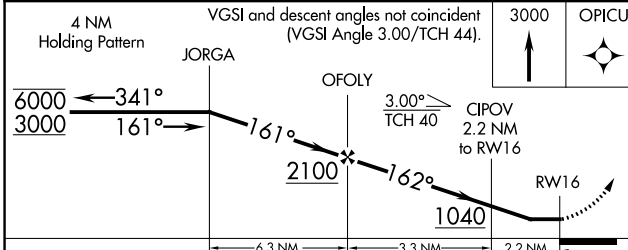
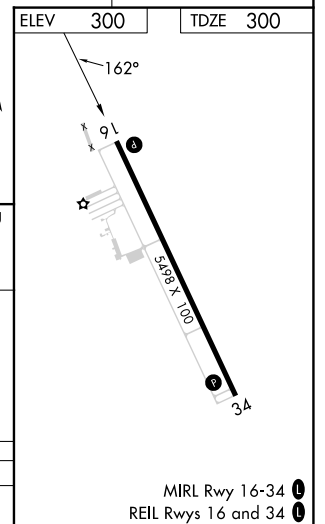
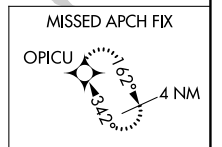
MISSED APPROACH: Climb to 3000 direct OPICU and hold.

AWOS-3 <b>119.325</b>	CHARLOTTE APP CON <b>120.05 307.8</b>	UNICOM <b>122.8 (CTAF) 0</b>
--------------------------	--	---------------------------------



SE-2, 22 FEB 2024 to 21 MAR 2024

SE-2, 22 FEB 2024 to 21 MAR 2024



CATEGORY	A	B	C	D
LNAV MDA		680-1	380 (400-1)	

MIRL Rwy 16-34 **0**  
REIL Rwy 16 and 34 **0**