

WAAS CH 48931 W17A	APP CRS 174°	Rwy Idg TDZE Apt Elev	5001 105 105
--	------------------------	-----------------------------	---

RNAV (GPS) RWY 17

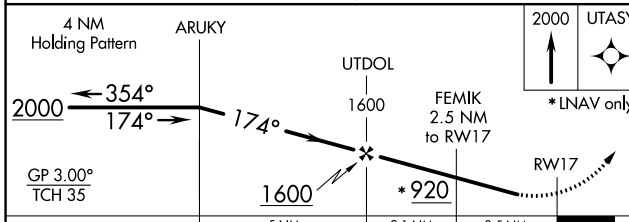
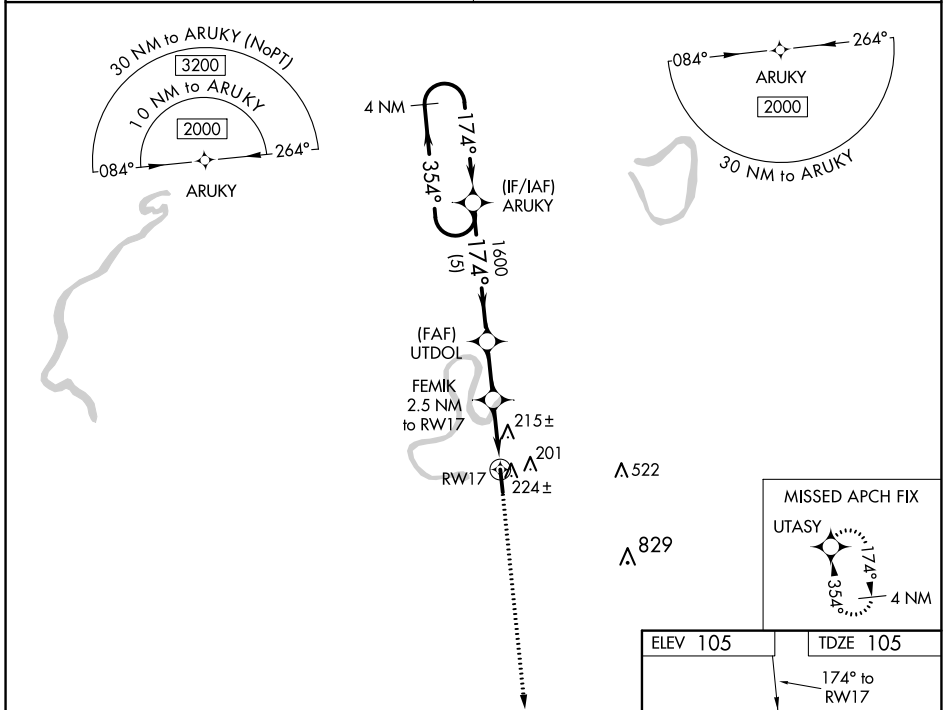
YAZOO COUNTY (87I)

NA Baro-VNAV NA. Use Madison altimeter setting; when not received, use Jackson altimeter setting and increase all DA 8 feet and all MDA 20 feet; increase LNAV/VNAV visibility all Cats 1/2 mile. DME/DME RNP-0.3 NA. Helicopter visibility reduction below 3/4 SM NA.

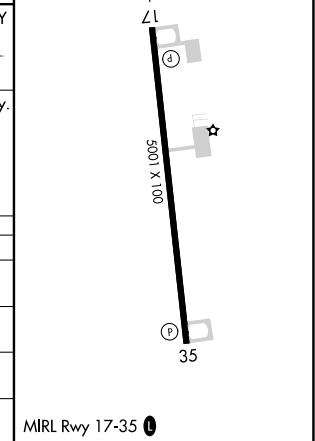
MISSED APPROACH: Climb to 2000 direct UTASY and hold.

MEMPHIS CENTER **132.5 259.1**

UNICOM **122.8 (CTAF) 0**



CATEGORY	A	B	C	D
LPV DA		461-1¼	356 (400-1¼)	
LNAV/VNAV DA		622-1¾	517 (600-1¾)	
LNAV MDA	580-1	475 (500-1)	580-1¾	475 (500-1¾)
CIRCLING	640-1	535 (600-1)	640-1½	660-2 555 (600-2)



SC-4, 27 JAN 2022 to 24 FEB 2022

SC-4, 27 JAN 2022 to 24 FEB 2022

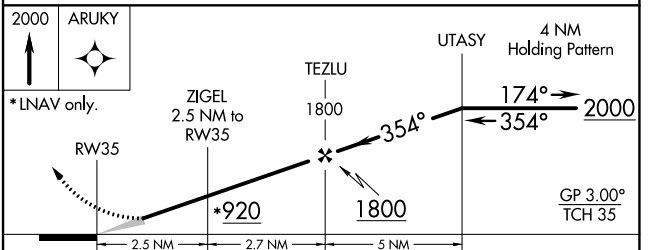
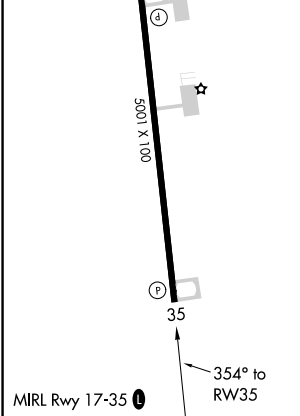
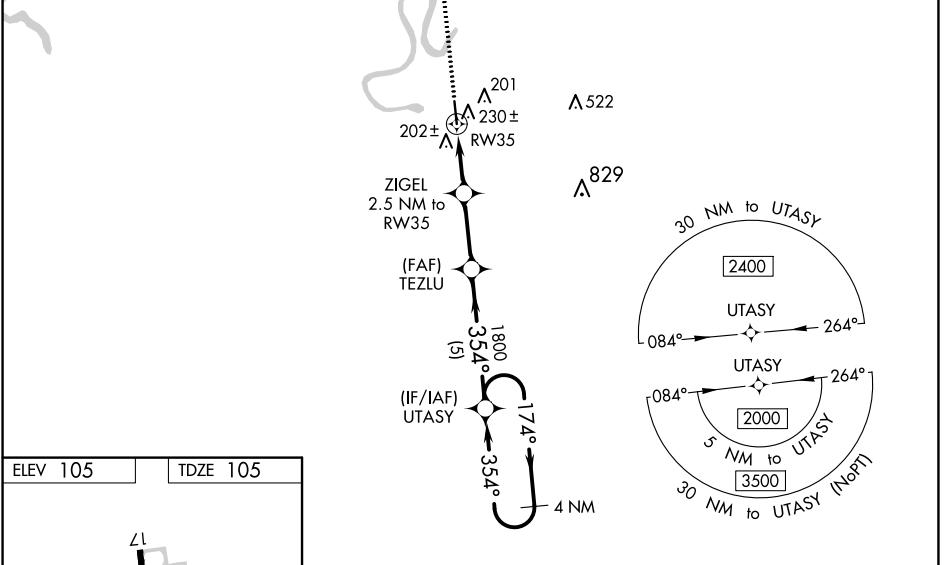
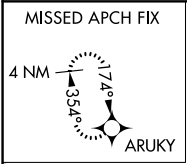
WAAS CH 99431 W35A	APP CRS 354°	Rwy Idg TDZE Apt Elev	5001 105 105
--	------------------------	-----------------------------	---

RNAV (GPS) RWY 35

YAZOO COUNTY (87I)

RNP APCH.	MISSED APPROACH: Climb to 2000 direct ARUKY and hold.
<p>Baro-VNAV NA.</p> <p>Use Madison altimeter setting; when not received, use Jackson altimeter setting and increase all DA 8 feet and all MDA 20 feet.</p>	

MEMPHIS CENTER 132.5 259.1	UNICOM 122.8 (CTAF)
--------------------------------------	-------------------------------



CATEGORY	A	B	C	D
LPV DA	461-1¼		356 (400-1¼)	
LNAV/VNAV DA	606-1¾		501 (500-1¾)	
LNAV MDA	600-1 495 (500-1)		600-1½ 495 (500-1½)	

SC-4, 27 JAN 2022 to 24 FEB 2022

SC-4, 27 JAN 2022 to 24 FEB 2022