

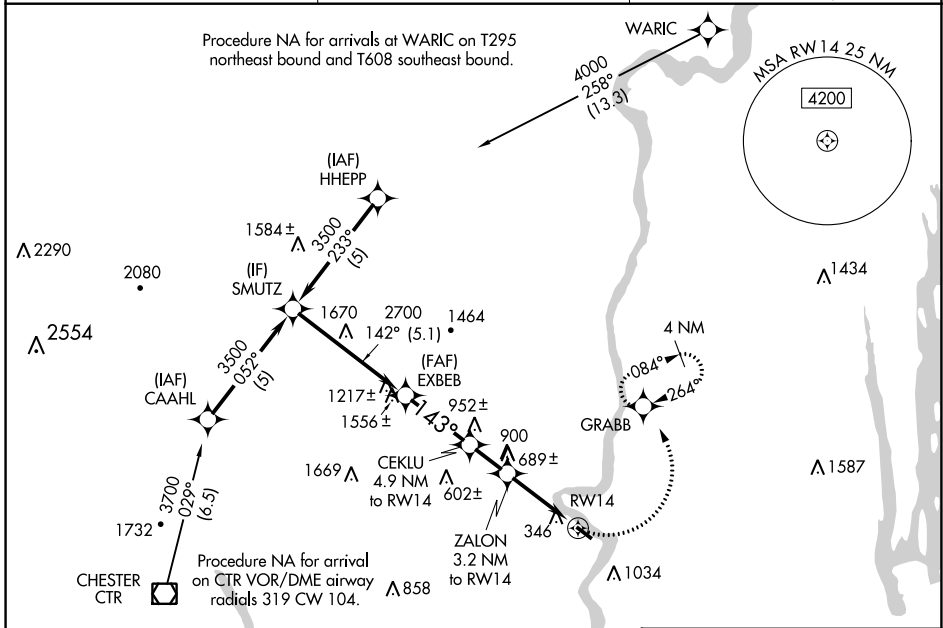
APP CRS	Rwy Idg	<b>3335</b>
<b>143°</b>	TDZE	<b>121</b>
	Apt Elev	<b>121</b>

# RNAV (GPS) RWY 14

NORTHAMPTON (7B2)

RNP APCH - GPS.	<p>Procedure NA at night. Obtain local altimeter setting on CTAF; when not received, use Windsor Locks altimeter setting. Rwy 14 helicopter visibility reduction below 1 SM NA.</p>	<p>MISSED APPROACH: Climbing left turn to 3000 direct GRABB and hold, continue climb-in-hold to 3000.</p>
<p><b>▽</b> Procedure NA</p>		

BRADLEY APP CON <b>125.35 281.5</b>	CLNC DEL <b>133.6</b>	UNICOM <b>122.7 (CTAF)</b>
--	--------------------------	-------------------------------



NE-1, 22 FEB 2024 to 21 MAR 2024

NE-1, 22 FEB 2024 to 21 MAR 2024

<p>VGSI and descent angles not coincident (VGSI Angle 4.50/TCH 60). * 1820 when using Windsor Locks altimeter setting. ** 1260 when using Windsor Locks altimeter setting.</p>		ELEV <b>121</b>	TDZE <b>121</b>
CATEGORY	A	B	D
RNAV MDA	940-1 819 (900-1)	940-1¼ 819 (900-1¼)	NA
CIRCLING	940-1¼ 819 (900-1¼)	1400-1½ 1279 (1300-1½)	NA
WINDSOR LOCKS ALTIMETER SETTING MINIMUMS			
RNAV MDA	1020-1¼ 899 (900-1¼)	899 (900-1¼)	NA
CIRCLING	1020-1¼ 899 (900-1¼)	1460-1½ 1339 (1400-1½)	NA

MIRL Rwy 14-32