

APP CRS 188°	Rwy Idg 3700
	TDZE 1762
	Apt Elev 1774

RNAV (GPS) RWY 19

ANTELOPE COUNTY (4V9)

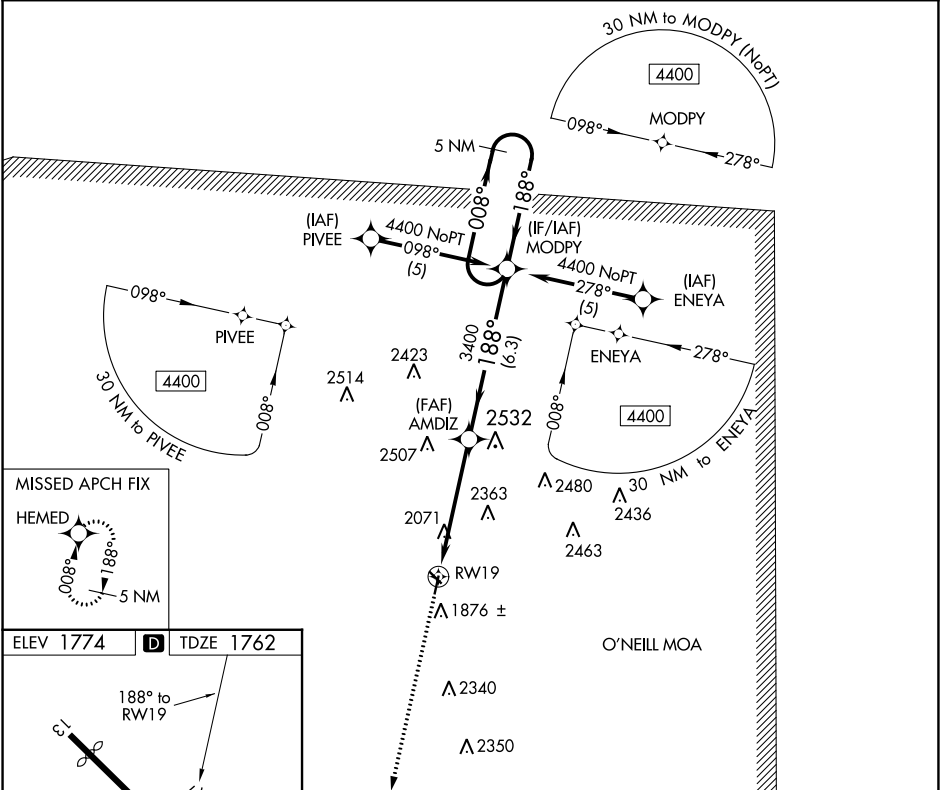
RNP APCH - GPS.

NA Visibility reduction by helicopters NA. Use Albion altimeter setting, when not received, use Norfolk altimeter setting and increase all MDA 40 feet.

MISSED APPROACH: Climb to 4400 direct HEMED and hold.

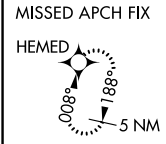
MINNEAPOLIS CENTER
128.0 257.95

UNICOM
122.8 (CTAF)

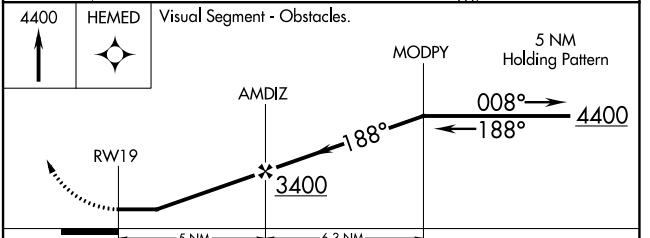
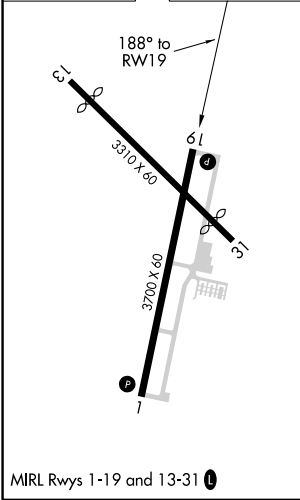


NC-2, 22 FEB 2024 to 21 MAR 2024

NC-2, 22 FEB 2024 to 21 MAR 2024



ELEV 1774	D	TDZE 1762
-----------	----------	-----------



CATEGORY	A	B	C	D
LNAV MDA	2380-1	618 (700-1)	NA	
C CIRCLING	2380-1 606 (700-1)	2440-1 666 (700-1)	NA	