

WAAS CH 62840 W17A	APP CRS 171°	Rwy Idg TDZE Apt Elev	5943 693 693
--	------------------------	-----------------------------	---

RNAV (GPS) RWY 17

KENNETH COPELAND (4T2)

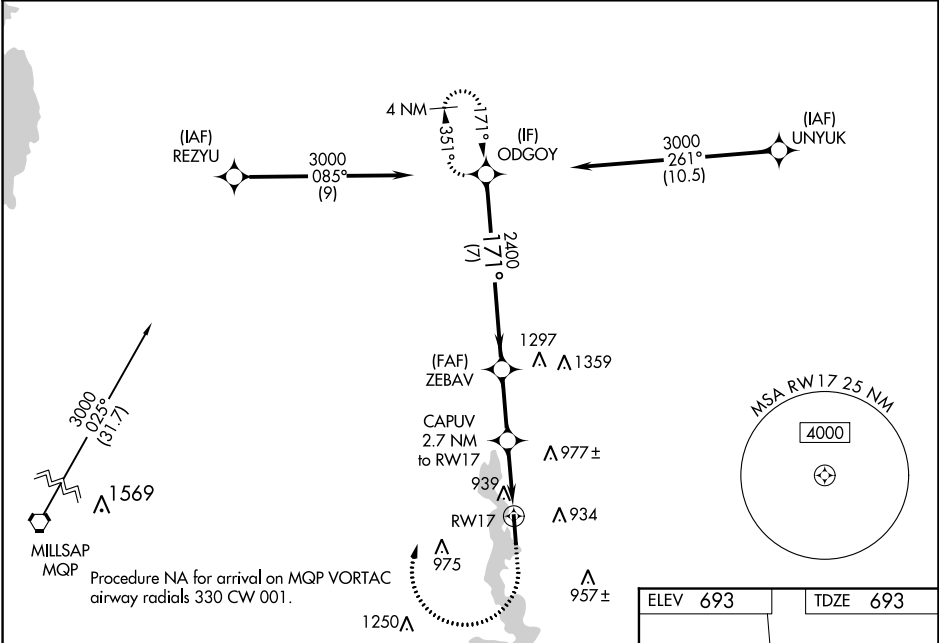
RNP APCH.

⚠ Baro-VNAV and VDP NA when using Fort Worth Meacham Intl altimeter setting. Rwy 17 helicopter visibility reduction below $\frac{3}{4}$ SM NA. For uncompensated Baro-VNAV systems, LNAV/VNAV NA below -16°C or above 54°C. Obtain local altimeter setting on CTAF; when not received, use Fort Worth Meacham Intl altimeter setting; Increase LPV DA to 973 feet; increase LNAV/VNAV DA to 1135 feet; increase all MDA 40 feet and LNAV Cat C/D and Circling Cat C visibility to $\frac{1}{4}$ SM.

MISSED APPROACH: Climb to 1200 then climbing right turn to 3100 direct ODGOY and hold.

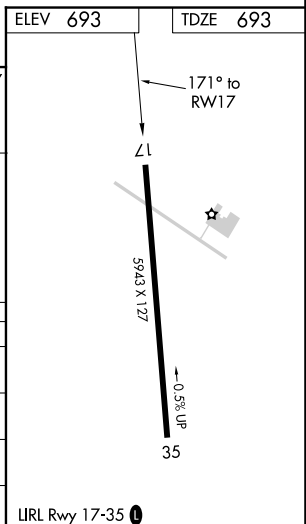
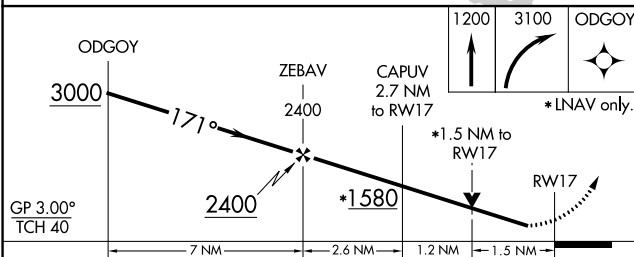
FORT WORTH CENTER
125.8 257.95

UNICOM
123.075 (CTAF)



SC-2, 09 SEP 2021 to 07 OCT 2021

SC-2, 09 SEP 2021 to 07 OCT 2021



CATEGORY	A	B	C	D
LPV DA	943-1 250 (300-1)			
LNAV/VNAV DA	1105-1 $\frac{3}{8}$ 412 (500-1 $\frac{3}{8}$)			
LNAV MDA	1200-1 507 (600-1)	1200-1 $\frac{3}{8}$ 507 (600-1 $\frac{3}{8}$)		
C CIRCLING	1240-1 547 (600-1)	1340-1 $\frac{3}{4}$ 647 (700-1 $\frac{3}{4}$)	1440-2 $\frac{1}{2}$ 747 (800-2 $\frac{1}{2}$)	

WAAS CH 57940 W35A	APP CRS 351°	Rwy Idg TDZE Apt Elev	5943 675 693
--	------------------------	-----------------------------	---

RNAV (GPS) RWY 35

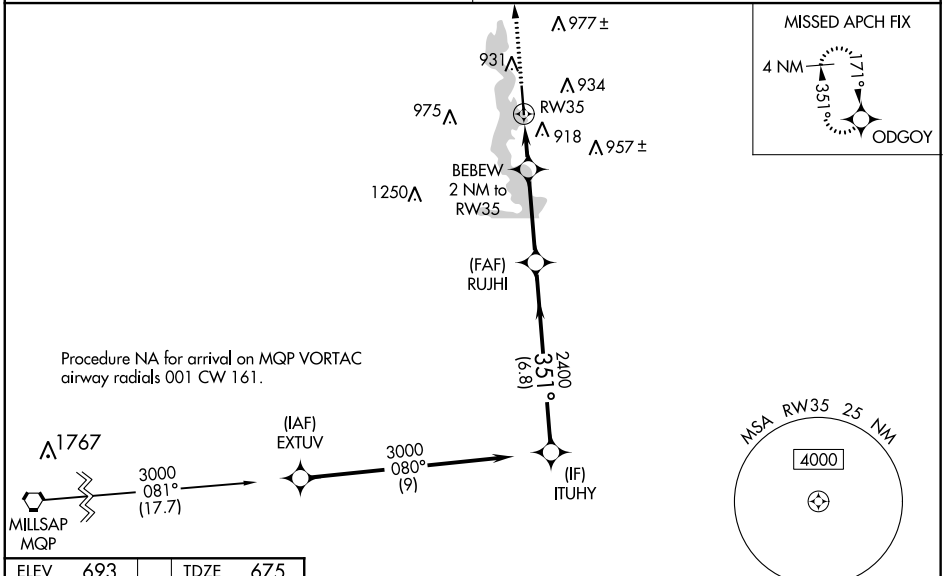
KENNETH COPELAND (4T2)

RNP APCH.

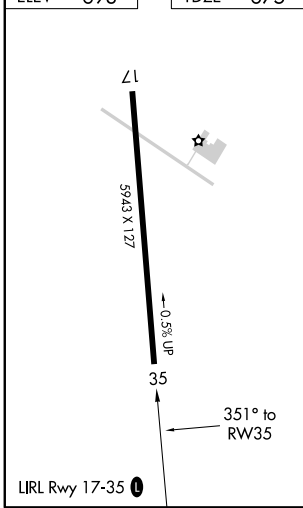
NA Baro-VNAV and VDP NA when using Fort Worth Meacham Intl altimeter setting. Rwy 35 helicopter visibility reduction below 3/4 SM NA. For uncompensated Baro-VNAV systems, LNAV/VNAV NA below -16°C or above 54°C. Obtain local altimeter setting on CTAF; when not received, use Fort Worth Meacham Intl altimeter setting: Increase LPV DA to 955 feet; increase LNAV/VNAV DA to 1144 feet; increase all MDA 40 feet and LNAV Cat C/D and Circling Cat C visibility to 1/4 SM.

MISSED APPROACH: Climb to 3100 direct ODGOY and hold.

FORT WORTH CENTER 125.8 257.95	UNICOM 123.075 (CTAF)
--	---------------------------------



ELEV 693	TDZE 675
----------	----------



3100 ODGOY

*LNAV only.

ITUHY 3000

RUJHI 2400

BEBEW 2 NM to RWY 35

*1.5 NM to RWY 35

1320*

2400

351°

GP 3.00° TCH 40

	1.5 NM	0.5 NM	3.3 NM	6.8 NM
CATEGORY	A	B	C	D
LPV DA	925-1 250 (300-1)			
LNAV/VNAV DA	1114-1½ 439 (500-1½)			
LNAV MDA	1180-1	505 (500-1)	1180-1¾	505 (500-1¾)
CIRCLING	1240-1	547 (600-1)	1340-1¾ 647 (700-1¾)	1440-2½ 747 (800-2½)

SC-2, 09 SEP 2021 to 07 OCT 2021

SC-2, 09 SEP 2021 to 07 OCT 2021