

WAAS CH <b>86524</b> <b>W27A</b>	APP CRS <b>268°</b>	Rwy Idg <b>5000</b> TDZE <b>2925</b> Apt Elev <b>2933</b>
--	------------------------	--

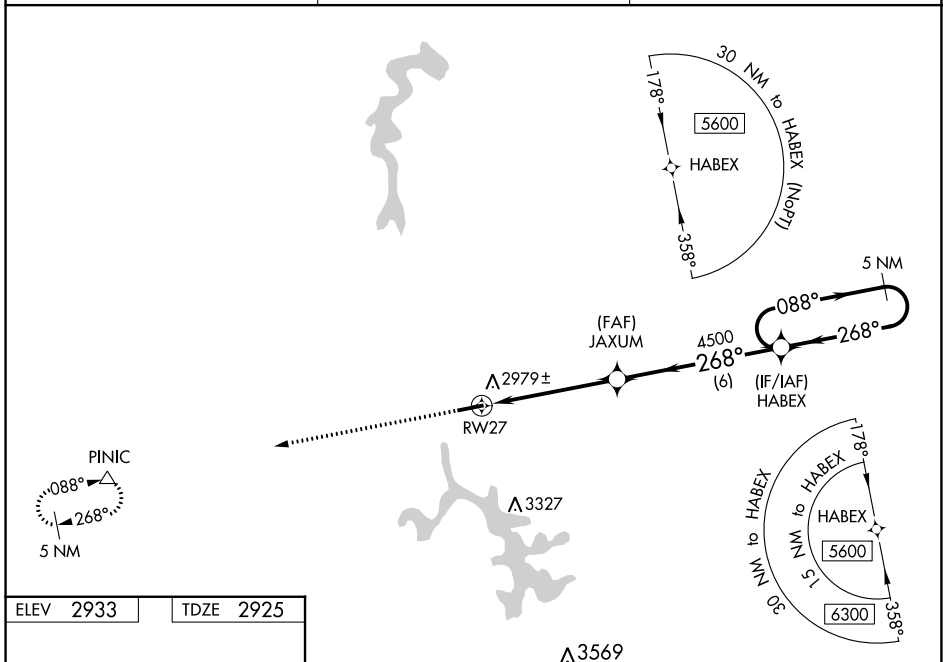
# RNAV (GPS) RWY 27

GARRETT COUNTY (2G4)

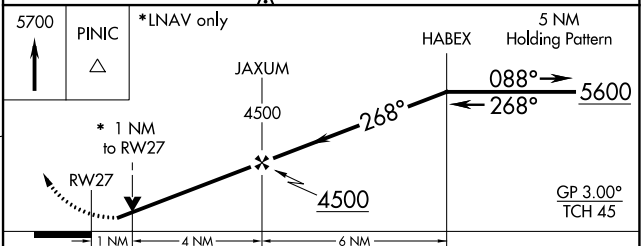
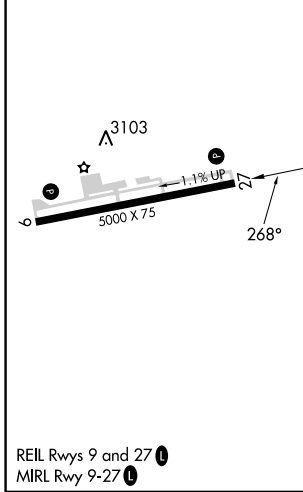
**⚠** Baro-VNAV and VDP NA when using Morgantown altimeter setting. For uncompensated Baro-VNAV systems, LNAV/VNAV NA below -20°C (-4°F) or above 54°C (130°F).  
**⚠** Helicopter visibility reduction below 3/4 SM NA. DME/DME RNP-0.3 NA. When local altimeter setting not received, use Morgantown altimeter setting and increase all DA and all MDA 300 feet. Increase LPV and LNAV/VNAV all Cats visibility 1 1/2 mile, LNAV Cat C visibility 3/8 mile and Circling Cat C visibility 1 mile.

**MISSED APPROACH:**  
Climb 5700 direct PINIC and hold.

AWOS-3 <b>120.125</b>	CLARKSBURG APP CON ★ <b>119.425 284.65</b>	UNICOM <b>123.0</b> (CTAF) <b>📻</b>
--------------------------	---	--



ELEV 2933	TDZE 2925
-----------	-----------



CATEGORY	A	B	C	D
LPV DA	3175-1	250 (300-1)		NA
LNAV/VNAV DA	3197-1	272 (300-1)		NA
LNAV MDA	3240-1	315 (400-1)		NA
<b>C</b> CIRCLING	3340-1 407 (500-1)	3400-1 467 (500-1)	3500-1 1/2 567 (600-1 1/2)	NA

NE-3, 22 FEB 2024 to 21 MAR 2024

NE-3, 22 FEB 2024 to 21 MAR 2024