

WAAS CH 65742 W10A	APP CRS 124°	Rwy Idg TDZE Apt Elev 5728 5931 5933
--	------------------------	--

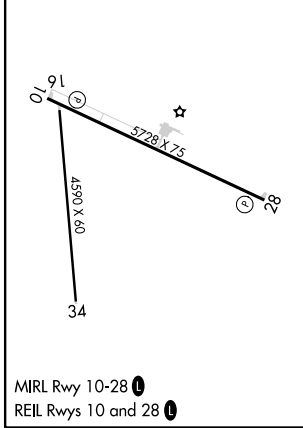
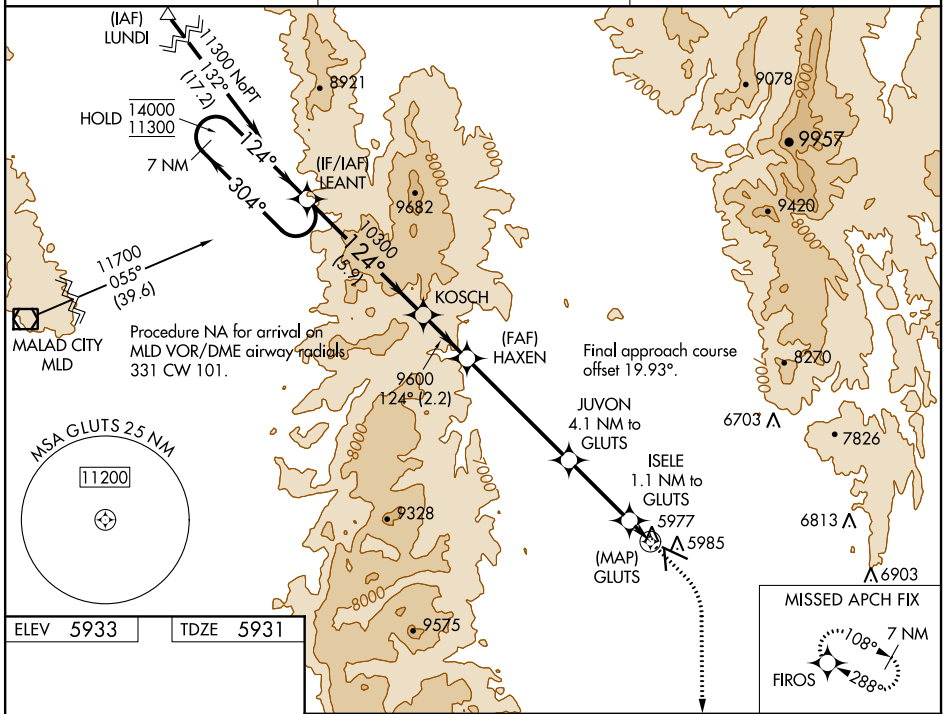
RNAV (GPS) RWY 10

BEAR LAKE COUNTY (1U7)

RNP APCH.
 When local altimeter setting not received, procedure NA.
 -23°C

MISSED APPROACH: (Do not exceed 185K until FIROs)
 Climb to 6340 then climbing right turn to 11000 direct FIROs and hold.

AWOS-3 118.525	SALT LAKE CENTER 128.35 239.25	UNICOM 122.8 (CTAF)
--------------------------	--	-------------------------------



7 NM Holding Pattern	LEANT	KOSCH	HAXEN	JUVON	ISELE	GLUTS	FIROS
14000 ← 304°	11300 → 124°	10300	9600	7680	6540	6340	11000
	5.9 NM	2.2 NM	5.2 NM	3.1 NM	1.1 NM	0.5	
CATEGORY	A	B	C	D			
LP MDA	6240-1 309 (400-1)						
LNAV MDA	6260-1 329 (400-1)						
CIRCLING	6320-1 387 (400-1)	6400-1 467 (500-1)	6720-2¼ 787 (800-2¼)	7140-3 1207 (1300-3)			

NW-1, 02 DEC 2021 to 30 DEC 2021

NW-1, 02 DEC 2021 to 30 DEC 2021

WAAS CH 62842 W28A	APP CRS 284°	Rwy Idg TDZE Apt Elev	5728 5933 5933
--	------------------------	-----------------------------	---

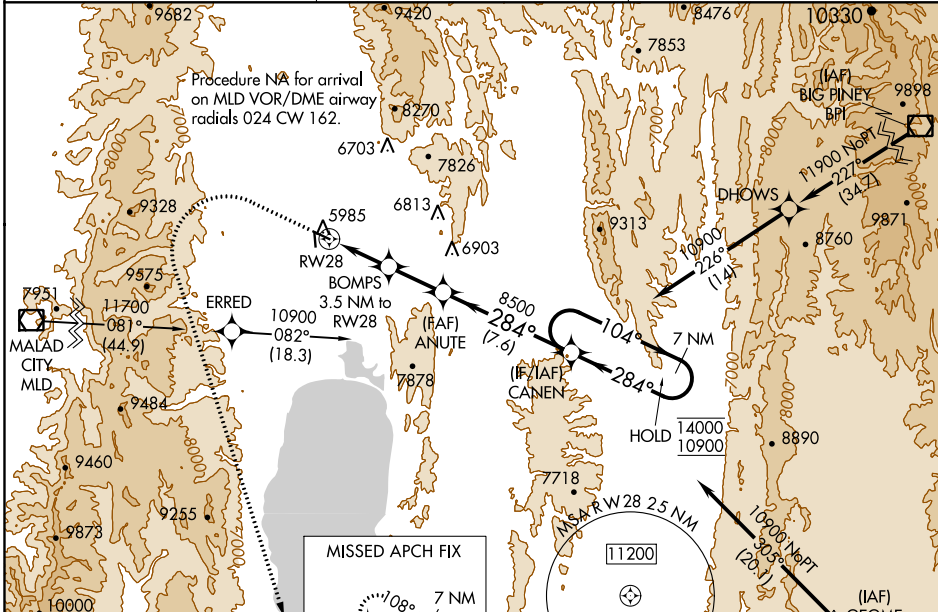
RNAV (GPS) RWY 28

BEAR LAKE COUNTY (1U7)

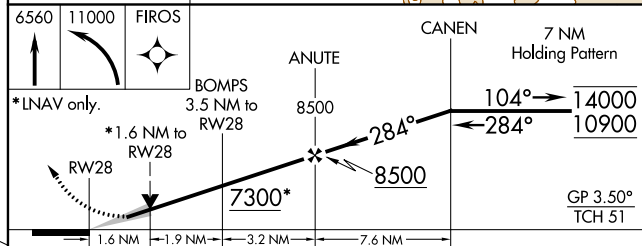
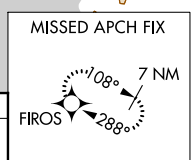
RNP APCH.
 Baro-NAV NA.
 When local altimeter setting not received, procedure NA.
 -23°C

MISSED APPROACH: (Do not exceed 185K until FIOS)
 Climb to 6560 then climbing left turn to 11000 direct FIOS and hold.

AWOS-3 118.525	SALT LAKE CENTER 128.35 239.25	UNICOM 122.8 (CTAF) 0
--------------------------	--	---------------------------------



ELEV 5933	TDZE 5933
-----------	-----------



CATEGORY	A	B	C	D
LPV DA	6275-1		342 (400-1)	
LNAV/VNAV DA	6365-1¼		432 (500-1¼)	
LNAV MDA	6560-1 627 (700-1)		6560-1¾ 627 (700-1¾)	
CIRCLING	6560-1 627 (700-1)		6720-2¼ 787 (800-2¼) 7140-3 1207 (1300-3)	

MIRL Rwy 10-28
 REIL Rwy 10 and 28

NW-1, 02 DEC 2021 to 30 DEC 2021

NW-1, 02 DEC 2021 to 30 DEC 2021