

WAAS CH <b>62941</b> <b>W27A</b>	APP CRS <b>272°</b>	Rwy ldg TDZE Apt Elev	<b>5400</b> <b>213</b> <b>225</b>
--	------------------------	-----------------------------	---

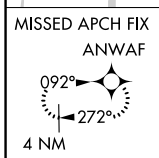
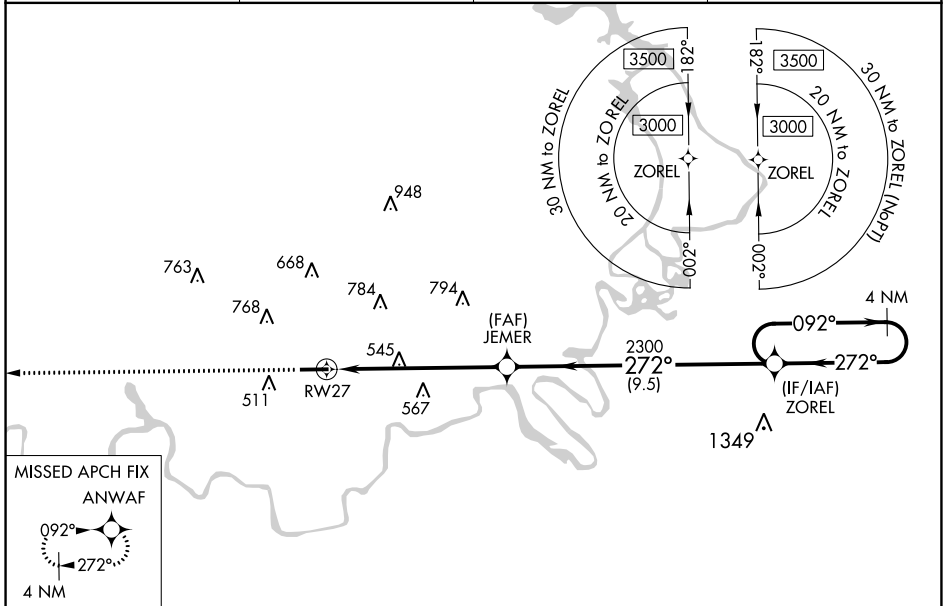
# RNAV (GPS) RWY 27

PRATTVILLE/GROUBY FLD (1A9)

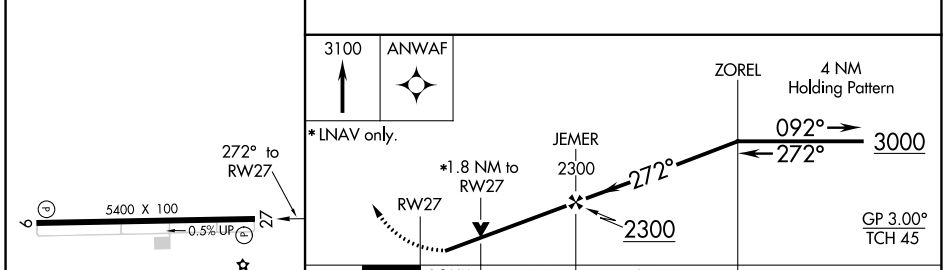
▼ Circling to Rwy 9 NA at night. For uncompensated Baro-VNAV systems, LNAV/VNAV NA below -15°C (5°F) or above 54°C (130°F). Rwy 27 helicopter visibility reduction below ¾ SM NA. DME/DME RNP-0.3 NA.

▲ MISSED APPROACH: Climb to 3100 direct ANWAF and hold.

AWOS-3P <b>118.025</b>	MONTGOMERY APP CON * <b>121.2 269.05</b>	GCO <b>121.725</b>	UNICOM <b>122.8 (CTAF)</b>
---------------------------	---	-----------------------	-------------------------------



ELEV 225	TDZE 213
----------	----------



CATEGORY	A	B	C	D
LPV DA		496-7/8	283 (300-7/8)	
LNAV/VNAV DA		659-13/8	446 (500-13/8)	
LNAV MDA	820-1	607 (600-1)	820-1 3/4	607 (600-1 3/4)
CIRCLING	1000-1	775 (800-1)	1080-2 1/2 855 (900-2 1/2)	1140-3 915 (1000-3)

MIRL Rwy 9-27   
 REIL Rwy 9 and 27

SE-4, 18 MAY 2023 to 15 JUN 2023

SE-4, 18 MAY 2023 to 15 JUN 2023

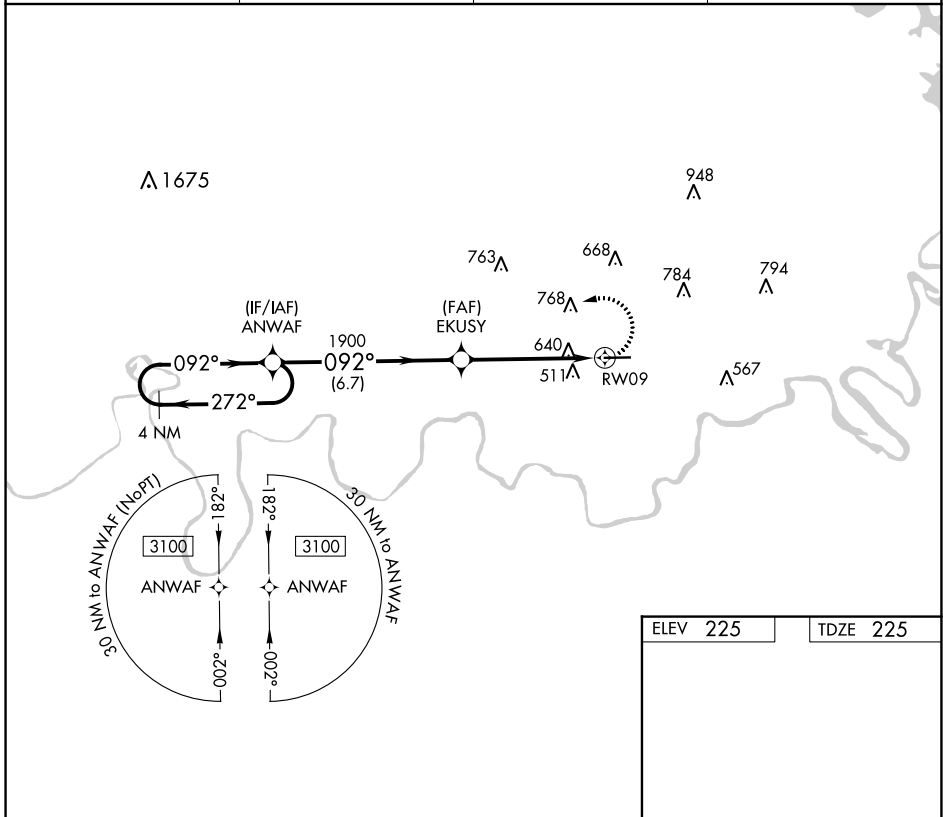
APP CRS <b>092°</b>	Rwy ldg TDZE Apt Elev	<b>5400</b> <b>225</b> <b>225</b>
------------------------	-----------------------------	---

# RNAV (GPS) RWY 9

PRATTVILLE/GROUBY FLD (1A9)

RNP APCH.		MISSED APPROACH: Climbing left turn to 3100 direct ANWAF and hold.
<p><b>▽</b> Rwy 9 helicopter visibility reduction below 1 SM NA. When local altimeter setting not received, use Montgomery Rgnl (Dannelly Fld) altimeter setting and increase all MDA 40 feet; increase LNAV Cats C/D visibility ½ SM. Straight-in Rwy 9 NA at night.</p>		

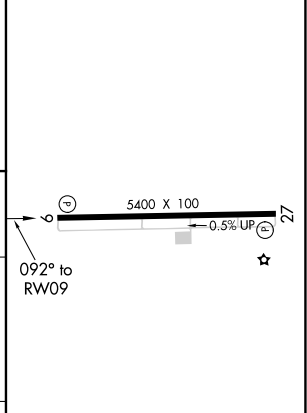
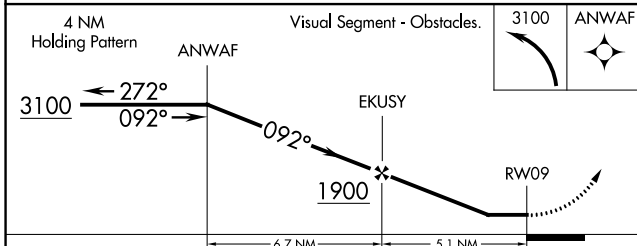
AWOS-3P <b>118.025</b>	MONTGOMERY APP CON ★ <b>121.2 269.05</b>	GCO <b>121.725</b>	UNICOM <b>122.8 (CTAF)</b> <b>0</b>
---------------------------	---	-----------------------	--



SE-4, 18 MAY 2023 to 15 JUN 2023

SE-4, 18 MAY 2023 to 15 JUN 2023

ELEV 225	TDZE 225
----------	----------



CATEGORY	A	B	C	D
LNAV MDA	980-1 755 (800-1)	980-1¼ 755 (800-1¼)	980-2	755 (800-2)