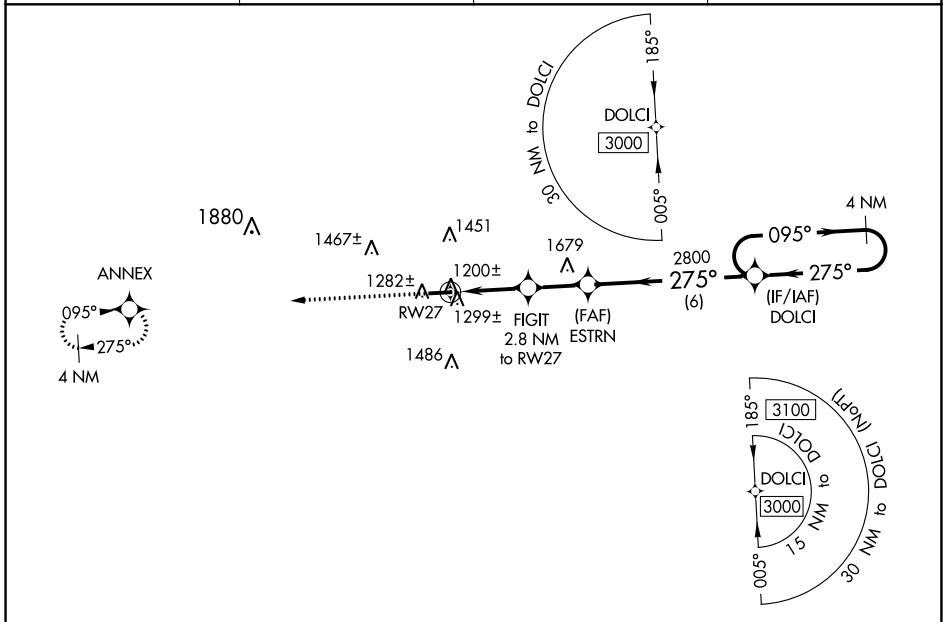


WAAS CH 57937 W27A	APP CRS 275°	Rwy Idg TDZE 1215 Apt Elev 1227
--	------------------------	---

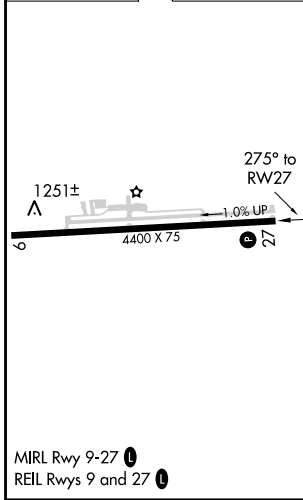
RNAV (GPS) RWY 27

HOLMES COUNTY (10G)

RNP APCH.			MISSED APPROACH: Climb to 3000 direct ANNEX and hold.
⚠ NA When local altimeter setting not received, use Wayne County altimeter setting and increase all MDA 60 feet. Increase LNAV Cat C/D and Circling Cat C/D visibility ¼ mile.			
AWOS-3 128.325	INDIANAPOLIS CENTER 124.45 370.9	UNICOM 123.0 (CTAF)	123.4 0



ELEV 1227	TDZE 1215
-----------	-----------



3000	ANNEX	VGSi and descent angles not coincident (VGSi Angle 3.00/TCH 25).		4 NM Holding Pattern
3000	ANNEX	FIGIT 2.8 NM to RW27	ESTRN	DOLCI
2100	2800	0.9 NM to RW27	3.00° TCH 40	275°
0.9	1.9	2.2	6	
CATEGORY	A	B	C	D
LP MDA	1480-1 265 (300-1)			
LNAV MDA	1560-1 345 (400-1)			
CIRCLING	1760-1	533 (600-1)	1840-1¾ 613 (700-1¾)	1860-2 633 (700-2)

EC-2, 01 DEC 2022 to 29 DEC 2022

EC-2, 01 DEC 2022 to 29 DEC 2022

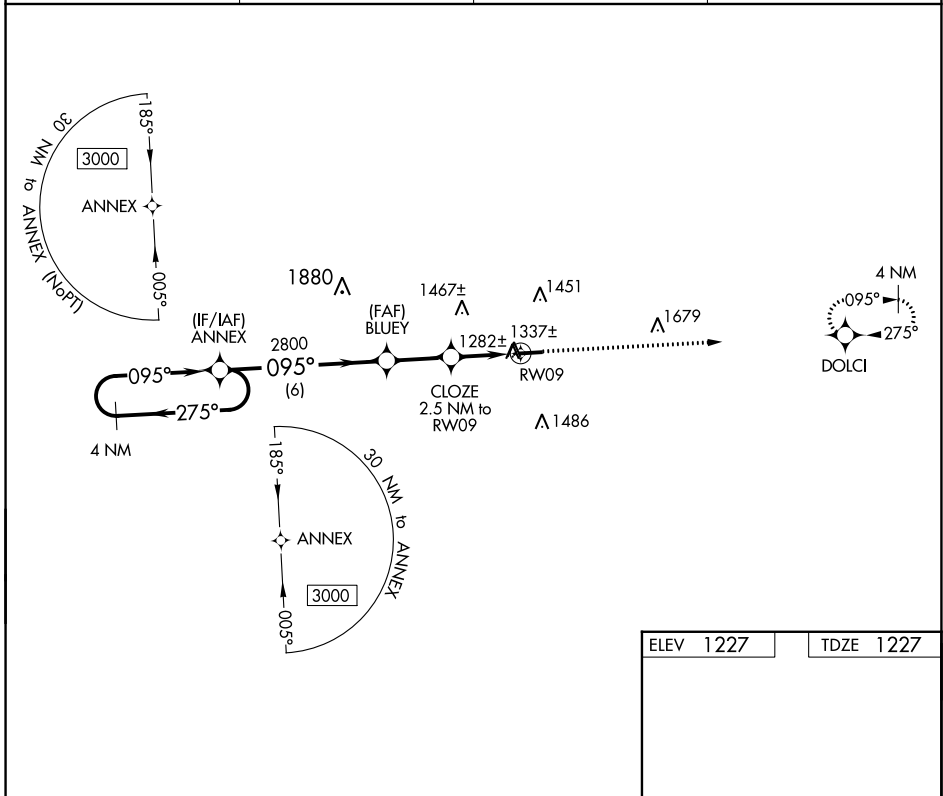
APP CRS	Rwy Idg	4400
095°	TDZE	1227
	Apt Elev	1227

RNAV (GPS) RWY 9

HOLMES COUNTY (10G)

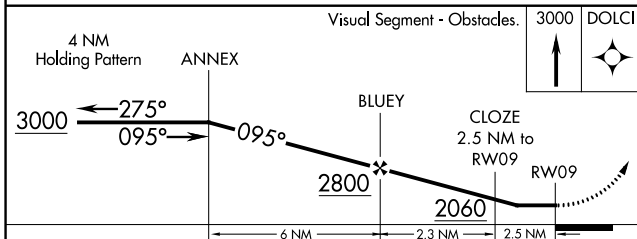
RNP APCH.	<p>▼ Rwy 9 helicopter visibility reduction below 3/4 SM NA. When local altimeter setting not received, use Wayne County altimeter setting and increase all MDA 60 feet. Increase LNAV and Circling Cat C/D visibility 1/4 mile.</p> <p>▲ NA</p>	<p>MISSED APPROACH: Climb to 3000 direct DOLCI and hold.</p>
-----------	---	--

AWOS-3 128.325	INDIANAPOLIS CENTER 124.45 370.9	UNICOM 123.0 (CTAF)	123.4 0
--------------------------	--	-------------------------------	----------------



EC-2, 01 DEC 2022 to 29 DEC 2022

EC-2, 01 DEC 2022 to 29 DEC 2022



ELEV 1227	TDZE 1227
-----------	-----------

CATEGORY	A	B	C	D
LNAV MDA	1620-1	393 (400-1)	1620-1 1/8	393 (400-1 1/8)
CIRCLING	1760-1	533 (600-1)	1840-1 3/4 613 (700-1 3/4)	1860-2 633 (700-2)

