

WAAS CH <b>78337</b> <b>W14A</b>	APP CRS <b>144°</b>	Rwy Idg TDZE Apt Elev	<b>3701</b> <b>55</b> <b>55</b>
--	------------------------	-----------------------------	---------------------------------------

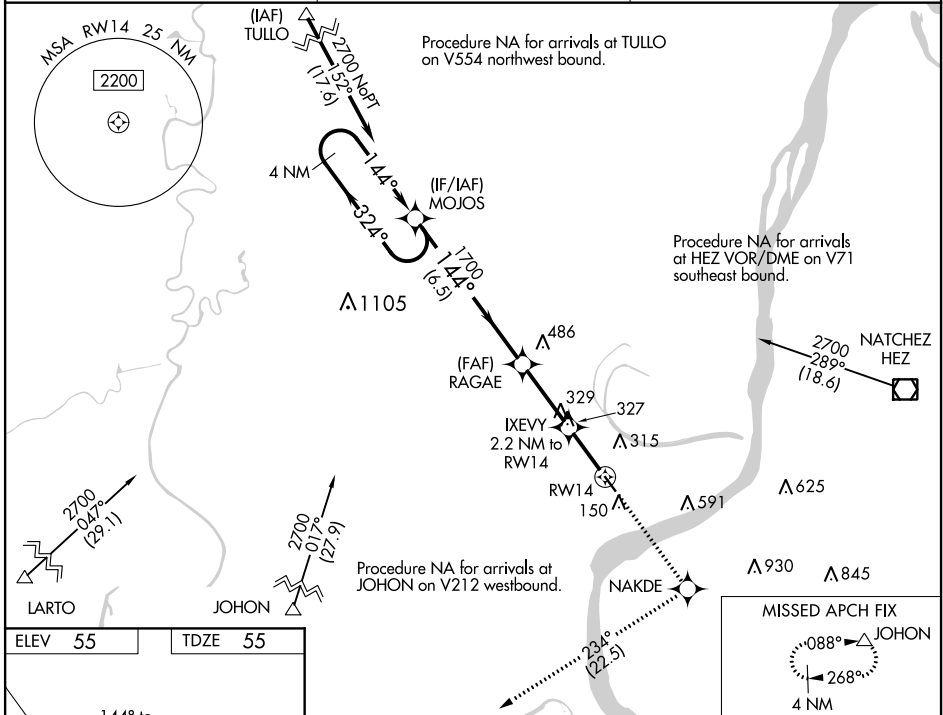
# RNAV (GPS) RWY 14

CONCORDIA PARISH (ØR4)

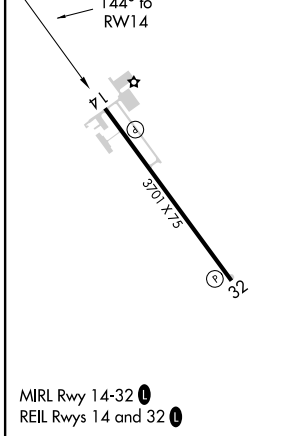
**⚠ NA** DME/DME RNP-0.3 NA. Use Natchez altimeter setting; when not received, use Esler Rgnl altimeter setting and increase all DA 48 feet and all MDA 60 feet and increase LPV all Cats, LNAV/VNAV all Cats, and Circling Cat C visibility ¼ mile and LNAV Cat C visibility ½ mile. Baro-VNAV NA. Helicopter visibility reduction below ¾ SM NA.

**MISSED APPROACH:** Climb to 3000 direct NAKDE and on track 234° to JOHON and hold.

AWOS-3 <b>118.2</b>	HOUSTON CENTER <b>120.975 299.6</b>	UNICOM <b>122.8 (CTAF) Ø</b>
------------------------	--	---------------------------------



ELEV 55	TDZE 55
---------	---------



4 NM Holding Pattern MOJOS	3000	NAKDE	JOHON	
2700 ← 324°	↑	✦	tr 234°	
144° →			*LNAV only.	
GP 3.00°				
TCH 50				
	1700	IXEVEY 2.2 NM to RW14	RW14	
	1700	*800		
	6.5 NM	2.8 NM	2.2 NM	
CATEGORY	A	B	C	D
LPV DA		409-1½	354 (400-1½)	NA
LNAV/VNAV DA		541-1½	486 (500-1½)	NA
LNAV MDA	640-1	585 (600-1)	640-1¾ 585 (600-1¾)	NA
☑ CIRCLING	680-1	625 (700-1)	960-2¾ 905 (1000-2¾)	NA

SC-4, 08 SEP 2022 to 06 OCT 2022

SC-4, 08 SEP 2022 to 06 OCT 2022

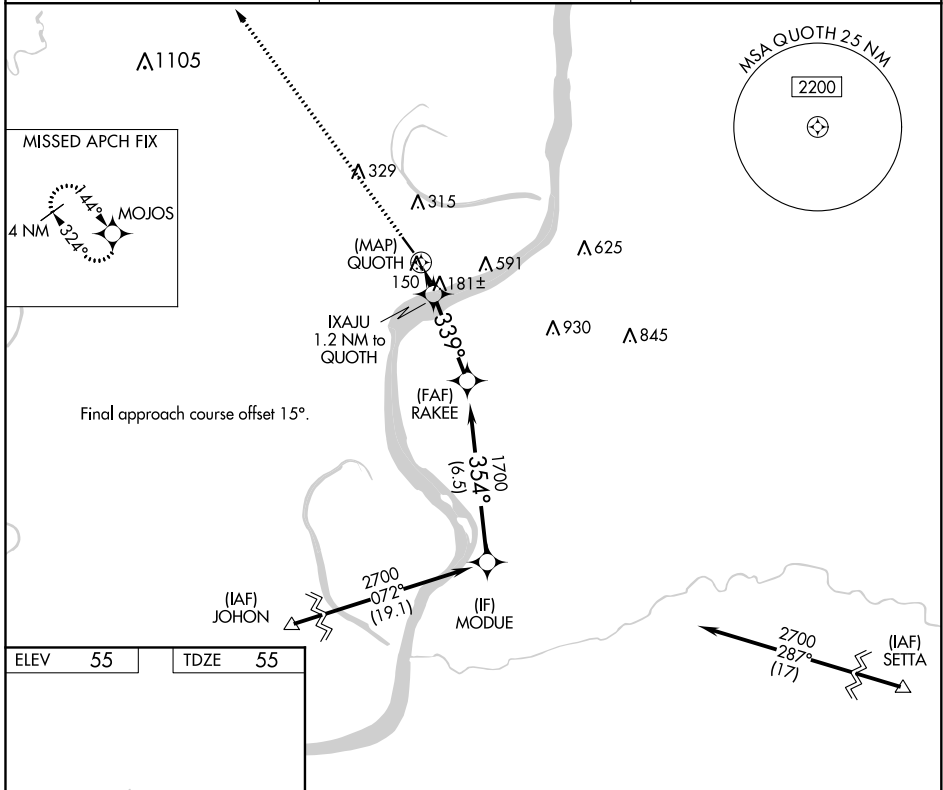
APP CRS	Rwy Idg	<b>3701</b>
<b>339°</b>	TDZE	<b>55</b>
	Apt Elev	<b>55</b>

# RNAV (GPS) RWY 32

CONCORDIA PARISH (ØR4)

<p><b>▽</b> DME/DME RNP-0.3 NA. Use Natchez altimeter setting; when not received, use Esler Rgnl altimeter setting and increase all MDA 60 feet and Circling Cat C visibility ¼ mile. Helicopter visibility reduction below ¾ SM NA.</p> <p><b>▲</b> NA</p>	<p>MISSED APPROACH: Climb to 2700 direct MOJOS and hold.</p>
---	--

AWOS-3 <b>118.2</b>	HOUSTON CENTER <b>120.975 299.6</b>	UNICOM <b>122.8</b> (CTAF) <b>Ø</b>
------------------------	--	--



ELEV	55	TDZE	55
------	----	------	----

Final approach course offset 15°.

REIL Rwy 14 and 32 **Ø**  
MIRL Rwy 14-32 **Ø**

2700	MOJOS				
	QUOTH	IXAJU 1.2 NM to QUOTH	RAKEE	MODUE	
		640	1700	2700	
			3.00° TCH 50		
	0.5	1.2 NM	3.3 NM	6.5 NM	
CATEGORY	A	B	C	D	
LNAV MDA	500-1	445 (500-1)	500-1 3/8 445 (500-1 3/8)	NA	
<b>C</b> CIRCLING	680-1	625 (700-1)	960-2 3/4 905 (1000-2 3/4)	NA	

SC-4, 08 SEP 2022 to 06 OCT 2022

SC-4, 08 SEP 2022 to 06 OCT 2022