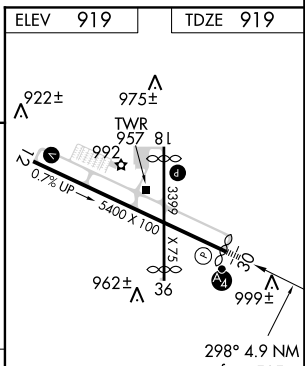
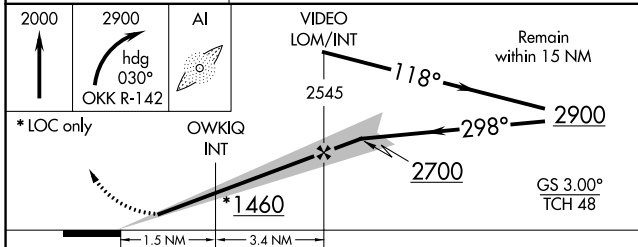
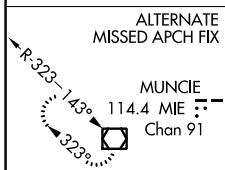
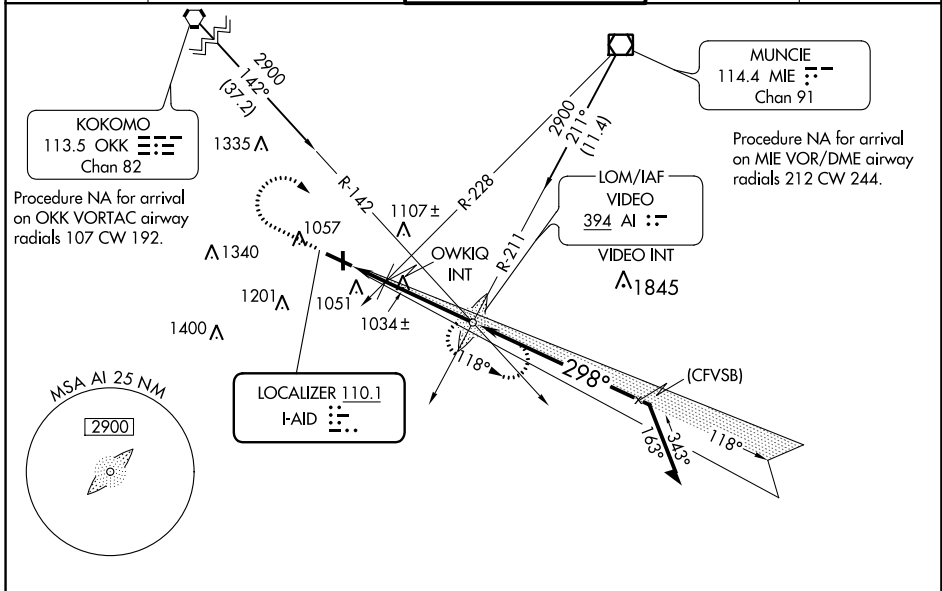


LOC I-AID 110.1	APP CRS 298°	Rwy ldg TDZE Apt Elev	5320 919 919
---------------------------	------------------------	-----------------------------	---

ILS or LOC RWY 30

ANDERSON MUNI-DARLINGTON FIELD (AID)

<p>▼ Circling Rwy 12, 36 NA at night. Rwy 30 helicopter visibility reduction below 3/4 SM NA.</p> <p>▲ MALSF </p> <p>MISSED APPROACH: Climb to 2000 then climbing right turn to 2900 heading 030° and OKK VORTAC R-142 to VIDEO LOM and hold.</p>	<p>AWOS-3 128.55</p>	<p>INDIANAPOLIS APP CON 120.65 317.8</p>	<p>ANDERSON TOWER ★ 126.0 (CTAF) 0</p>	<p>GND CON 121.6</p>	<p>UNICOM 122.95</p>
---	---------------------------------	---	---	---------------------------------	---------------------------------



CATEGORY	A	B	C	D
S-ILS 30	1209-3/4 290 (300-3/4)			
S-LOC 30	1360-3/4	441 (500-3/4)	1360-1	441 (500-1)
C CIRCLING	1360-1 441 (500-1)	1400-1 481 (500-1)	1520-1 3/4 601 (700-1 3/4)	1520-2 601 (700-2)

ELEV	919	TDZE	919		
<p>REIL Rwy 12 MIRL Rwy 12-30 and 18-36 0</p> <p>FAF to MAP 4.9 NM</p>					
Knots	60	90	120	150	180
Min:Sec	4:54	3:16	2:27	1:58	1:38

EC-2: 09 NOV 2017 to 07 DEC 2017

EC-2: 09 NOV 2017 to 07 DEC 2017

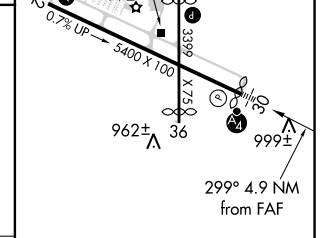
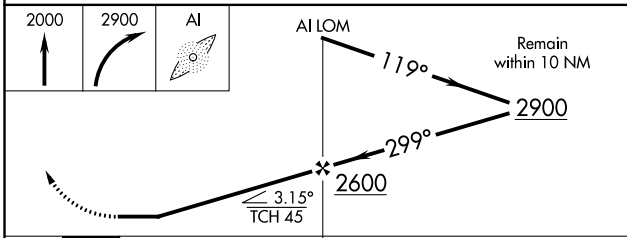
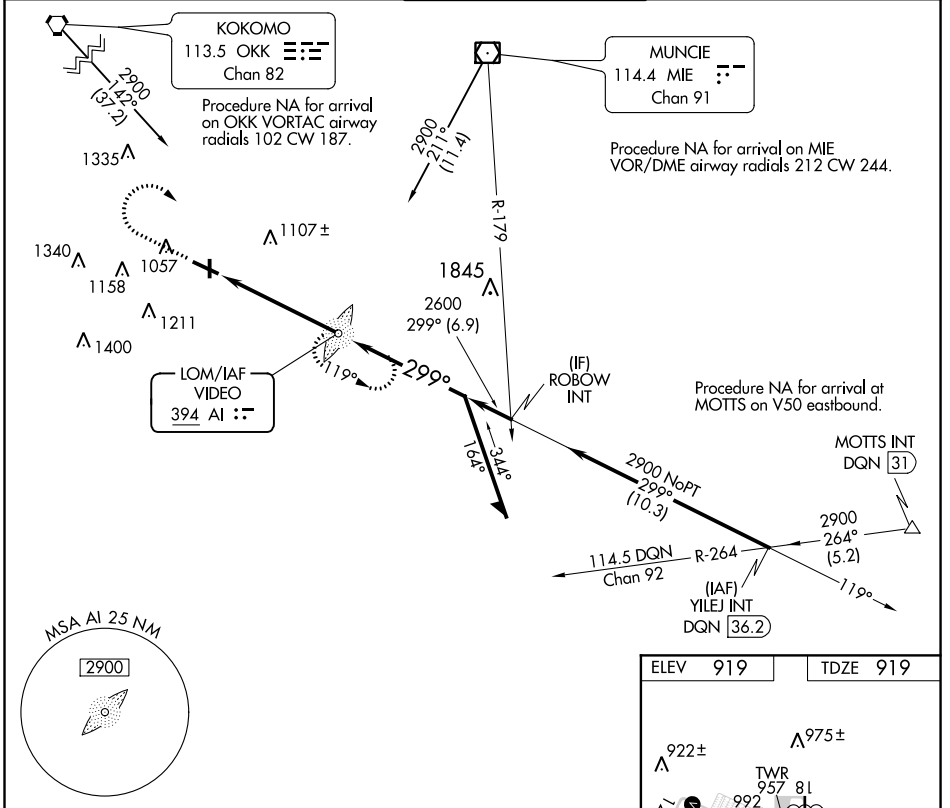
NDB RWY 30

ANDERSON MUNI-DARLINGTON FIELD (AID)

LOM AI 394	APP CRS 299°	Rwy Idg TDZE Apt Elev	5320 919 919
----------------------	------------------------	-----------------------------	---

<p>⚠ Rwy 30 helicopter visibility reduction below 3/4 SM NA. Circling Rwy 12, 36 NA at night. For inop ALS, increase S-30 Cat C/D visibility to 1 3/4 SM.</p>	<p>MALSF</p>	<p>MISSED APPROACH: Climb to 2000 then climbing right turn to 2900 direct VIDEO LOM and hold.</p>
--	---------------------	--

AWOS-3 128.55	INDIANAPOLIS APP CON 120.65 317.8	ANDERSON TOWER ★ 126.0 (CTAF) 0	GND CON 121.6	UNICOM 122.95
-------------------------	---	---	-------------------------	-------------------------



CATEGORY	A	B	C	D
S-30	1500-3/4	581 (600-3/4)	1500-1 3/8	581 (600-1 3/8)
C CIRCLING	1500-1	581 (600-1)	1520-1 3/8	1520-2
			601 (700-1 3/8)	601 (700-2)

REIL Rwy 12	MIRL Rwy 12-30 and 18-36 0
FAF to MAP 4.9 NM	
Knots	60 90 120 150 180
Min:Sec	4:54 3:16 2:27 1:58 1:38

NDB RWY 30

EC-2, 09 NOV 2017 to 07 DEC 2017

EC-2, 09 NOV 2017 to 07 DEC 2017

WAAS CH 56415 W30A	APP CRS 298°	Rwy Idg TDZE Apt Elev	5320 919 919
--	------------------------	-----------------------------	---

RNAV (GPS) RWY 30

ANDERSON MUNI-DARLINGTON FIELD (AID)

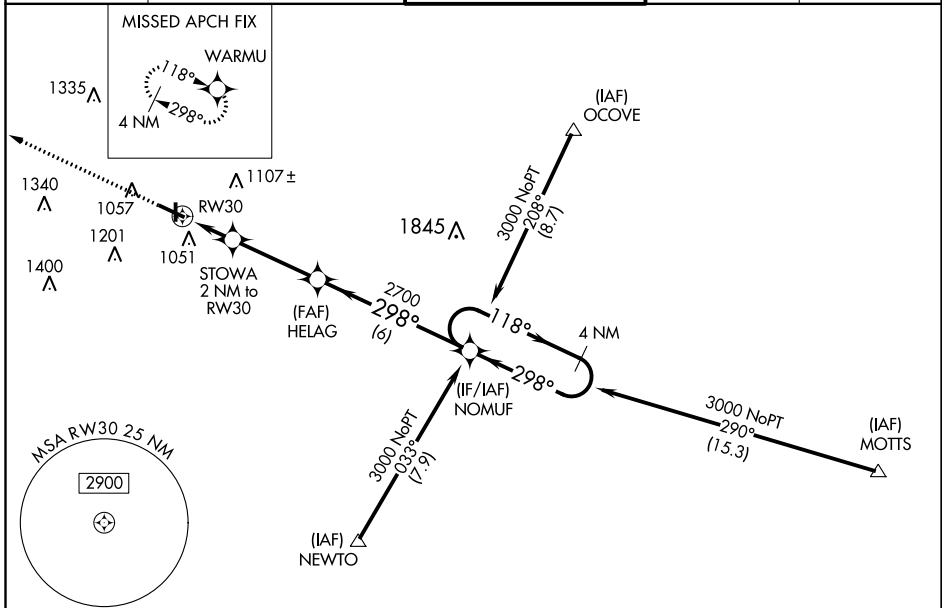
▼ Night landing: Rwy 36 NA. For uncompensated Baro-VNAV systems, LNAV/VNAV NA below -16°C (4°F) or above 47°C (116°F). DME/DME RNP-0.3 NA. Helicopter visibility reduction below ¼ SM NA. When local altimeter setting not received, use Muncie altimeter setting and increase all DA 32 feet and all MDA 40 feet, and increase LPV and LNAV/VNAV all Cats and LNAV Cat C visibility ¼ mile. Inoperative table does not apply.

MALSF

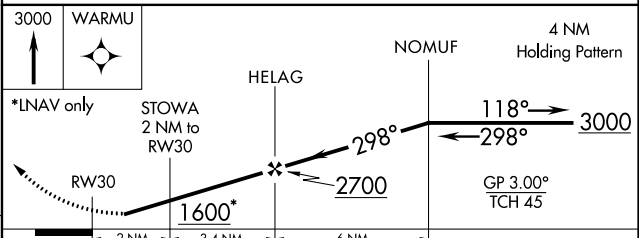
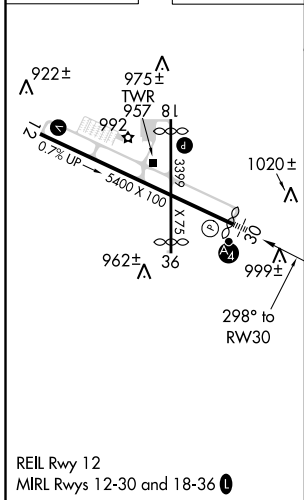


MISSED APPROACH:
Climb to 3000 direct WARMU and hold.

AWOS-3 128.55	INDIANAPOLIS APP CON 120.65 317.8	ANDERSON TOWER * 126.0 (CTAF) 0	GND CON 121.6	UNICOM 122.95
-------------------------	---	---	-------------------------	-------------------------



ELEV 919	TDZE 919
----------	----------



CATEGORY	A	B	C	D
LPV DA		1234-1	315 (400-1)	
LNAV/VNAV DA		1367-1½	448 (500-1½)	
LNAV MDA	1280-1	361 (400-1)		1280-1½ 361 (400-1½)
CIRCLING	1360-1 441 (500-1)	1400-1 481 (500-1)	1400-1½ 481 (500-1½)	1500-2 581 (600-2)